

Hoist With Motorized NTD Trolley

Hoist Model	DWG.	Dimensions(mm)					
		A	B	C	D	E	H
NHD-025-1+NTD-050-2	I	382	125.5	324	180	75~125	385
NHD-050-2+NTD-050-2	II						462
NHD-050-1+NTD-050-1	I	382	125.5	324	180	75~125	483
NHD-100-2+NTD-100-2	II						542
NHD-100-1+NTD-100-1	I	382	125.5	324	180	75~125	510
NHD-200-2+NTD-200-2	II	392	159	357	183	100~150	582

CHAIN BUCKET NO. SELECTION TABLE

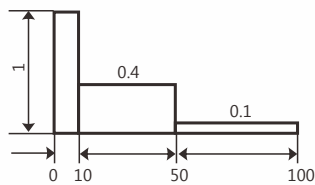
MODEL	CHAIN	LIFT										
		3M	4M	5M	6M	7M	8M	9M	10M	11M	12M	13M
NHD-025-1	Φ 4X12	NH1#				NH2#						NH5#
NHD-050-2	Φ 4X12	NH1#	NH2#			NH5#			NH6#			
NHD-050-1	Φ 6.3X19.1	NH2#				NH3#-1		NH4#-1				NH7#
NHD-100-2	Φ 6.3X19.1	NH2#	NH3#-1	NH4#-1		NH7#			NH8#			
NHD-100-1	Φ 7.1X20.2	NH3#				NH4#						NH9#
NHD-200-2	Φ 7.1X20.2	NH3#	NH4#			NH9#			NH10#			

*Remember to change bucket if the length of chain increased. *Maximun lift height : 50M

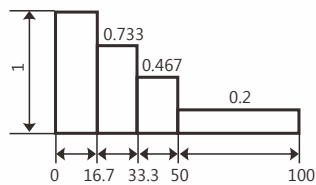
Hoist Classification

Load Spectrum	Cubic mean value	Avg. daily operating time (hr)	0.25<x ≤0.5	0.5<x ≤1	1<x ≤2	2<x ≤4	4<x ≤8	8<x ≤16
			400<x ≤800	800<x ≤1600	1600<x ≤3200	3200<x ≤6300	6300<x ≤12500	12500<x ≤25000
1 Light	K≤0.50	When normally working with approx. 1/3 of W.L.L. and are rarely with W.L.L.	1Dm	1Cm	1Bm	1Am	2m	3m
2 Medium	0.50<K≤0.63	When normally working with approx. 1/3 to 2/3 of W.L.L. and sometimes with W.L.L.	1Cm	1Bm	1Am	2m	3m	4m
3 Heavy	0.63<K≤0.80	When normally working with approx. 2/3 of W.L.L. and often with W.L.L.	1Bm	1Am	2m	3m	4m	5m
4 Very Heavy	0.80<K≤1.00	When normally working with W.L.L. or near W.L.L.	1Am	2m	3m	4m	5m	6m

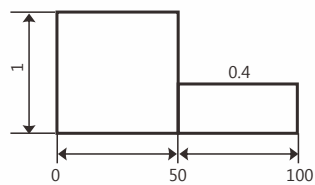
*Design for grade 2m in the FEM Regulation (FEM 9.511)



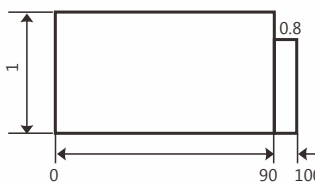
% operating time
Load spectrum 1



% operating time
Load spectrum 2



% operating time
Load spectrum 3



% operating time
Load spectrum



Plain Trolley



Low Headroom
Geared Trolley



Rigid Top Hook



Low Headroom Plain Trolley

- * Load spectrum conforms to **FEM 2m / ISO M5** covering a wide range of applications.
- * Speed ratio of 4:1 clearly delineates between high speed and low speed, providing the **precise load spotting capacities** required in many applications.
- * **48V control voltage** for operator safety.
- * The **rugged aluminum alloy casting** is engineered to withstand the rigors of repeated lifting cycles.
- * Standard suspensions include Plain Trolley (**PT**), Low headroom Plain Trolley (**LPT**), Low headroom Geared Trolley (**LGT**) and motorized Trolley.



Electric Chain Hoist

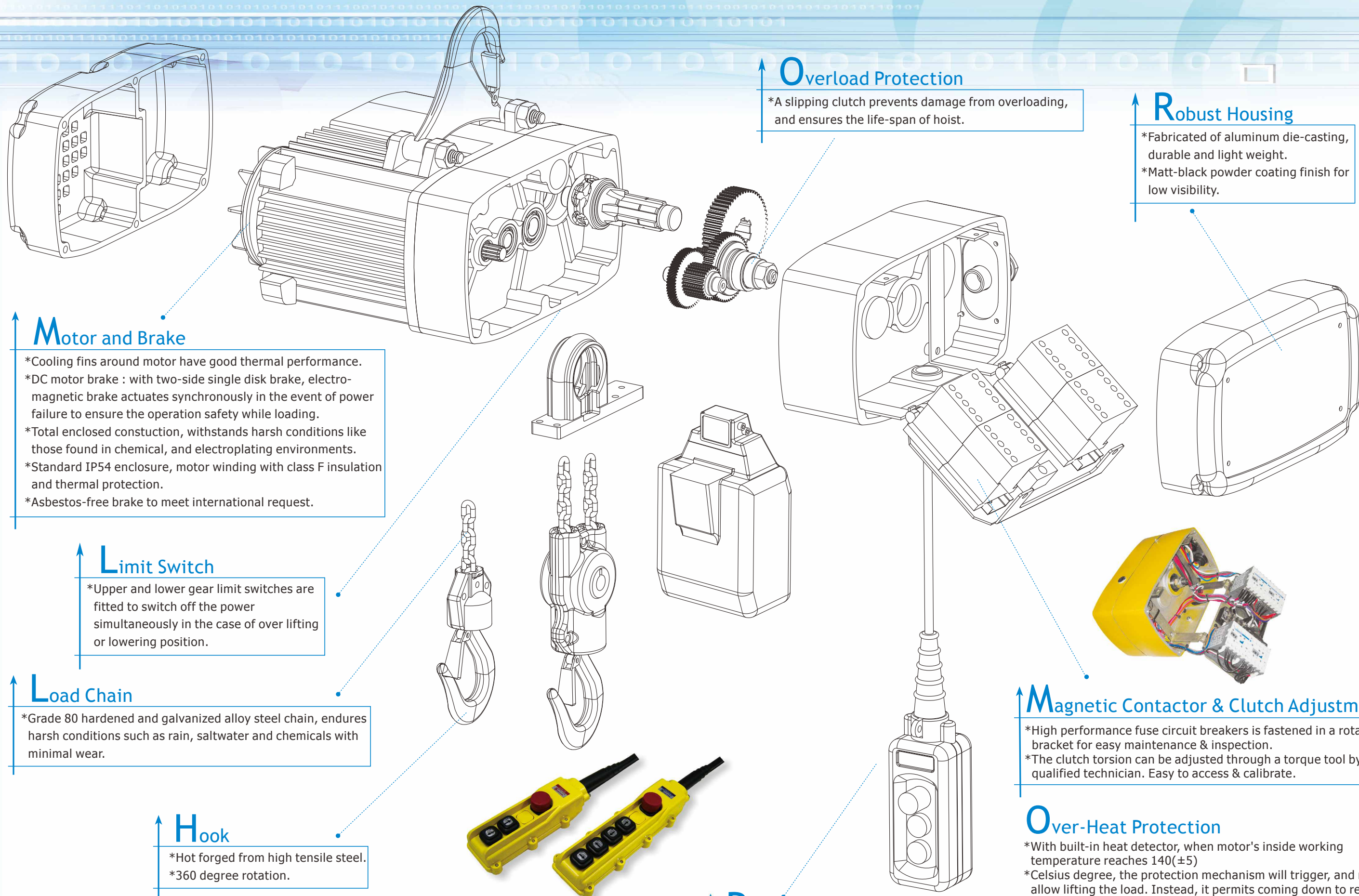


CHENG DAY MACHINERY WORKS CO., LTD.

No. 173, Wen Chiu Rd., Dajia Dist., Taichung City 437, Taiwan.
Tel: +886-4-2688-1581 Fax: +886-4-2688-1509
Website: www.chengday.com.tw E-mail: info@chengday.com.tw

- Revision of February, 2013 (Edition No.10) #950152
- No further notice while sizes and dimensions update
Quotations are based on practical dimensions.
- Due to the printing factors, the color of the products is
subject to minor deviation from the physical objects.





Motor and Brake

- *Cooling fins around motor have good thermal performance.
- *DC motor brake : with two-side single disk brake, electro-magnetic brake actuates synchronously in the event of power failure to ensure the operation safety while loading.
- *Total enclosed construction, withstands harsh conditions like those found in chemical, and electroplating environments.
- *Standard IP54 enclosure, motor winding with class F insulation and thermal protection.
- *Asbestos-free brake to meet international request.

Limit Switch

- *Upper and lower gear limit switches are fitted to switch off the power simultaneously in the case of over lifting or lowering position.

Load Chain

- *Grade 80 hardened and galvanized alloy steel chain, endures harsh conditions such as rain, saltwater and chemicals with minimal wear.

Hook

- *Hot forged from high tensile steel.
- *360 degree rotation.

Overload Protection

- *A slipping clutch prevents damage from overloading, and ensures the life-span of hoist.

Robust Housing

- *Fabricated of aluminum die-casting, durable and light weight.
- *Matt-black powder coating finish for low visibility.

Pendant Station

- *High protection grade IP65, fully water-proof, insulated, and impact resistant.

Magnetic Contactor & Clutch Adjustment

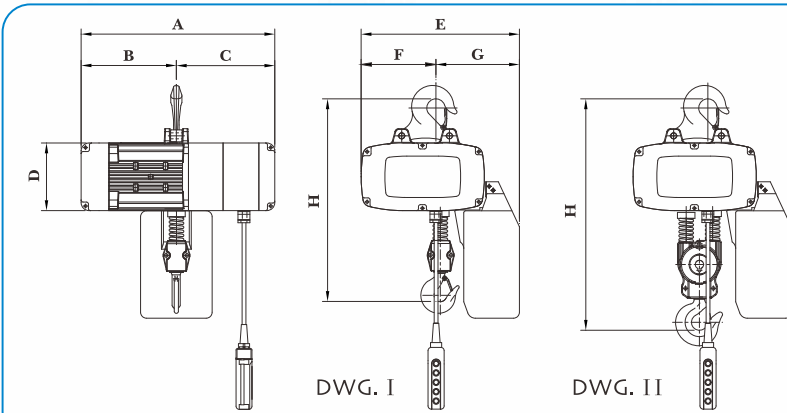
- *High performance fuse circuit breakers is fastened in a rotatable bracket for easy maintenance & inspection.
- *The clutch torsion can be adjusted through a torque tool by a qualified technician. Easy to access & calibrate.

Over-Heat Protection

- *With built-in heat detector, when motor's inside working temperature reaches 140(±5)
- *Celsius degree, the protection mechanism will trigger, and not allow lifting the load. Instead, it permits coming down to release the load.

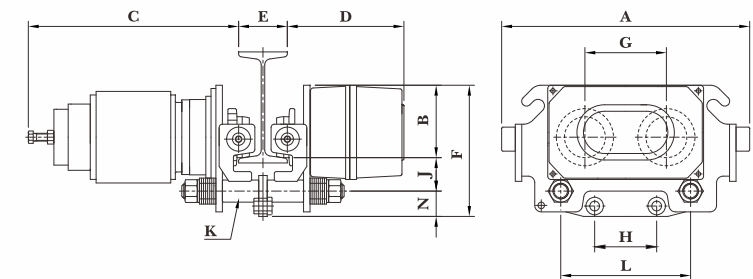
Phase error relay

- *Phase protection, in case of any phase missing or incorrect, the hoist will not be in active, ensuring the safety and durability to all omponents.



Electric Chain Hoist

Model	S.W.L (kg)	STD. Lift Height (m)	DWG.	Dimensions(mm)								Load Chain Dia X pitch (mm)	Hoisting		Traversing		E.D. Rating (%)	Load Chain Fall No.	N.W./G.W. (kg)
				A	B	C	D	E	F	G	H		Speed (m/min)	Motor Power (kW) (Pole)	Speed (m/min)	Motor Power (kW) (Pole)			
				12/3	12/3	50Hz	60Hz	50Hz	60Hz	50Hz	60Hz		50Hz	60Hz	50Hz	60Hz			
NHD-025-1	250	3	I	380	175	205	135	299	143	156	376	Φ 4.0 X 12.0	12/3	0.6/0.35 2/8P	20/5	0.12/0.03 2/8P	40/20	1	30/32
NHD-050-2	500		II								453		6/1.5	0.6/0.35 2/8P	20/5	0.12/0.03 2/8P		2	32/34
NHD-050-1	500	3	I	468	221	247	156	366	186	180	485	Φ 6.3 X 19.1	10/2.5	1.1/0.28 2/8P	20/5	0.12/0.03 2/8P	40/20	1	42/44
NHD-100-2	1000		II								531		5/1.25	1.1/0.28 2/8P	20/5	0.18/0.04 2/8P		2	45/47
NHD-100-1	1000	3	I	488	240	248	170	398	188	210	520	Φ 7.1 X 20.2	8/2	1.5/0.37 2/8P	20/5	0.18/0.04 2/8P	40/20	1	57/60
NHD-200-2	2000		II								592		4/1	1.5/0.37 2/8P	20/5	0.37/0.09 2/8P		2	62/65



Motorized NT(D) Trolley

Model	Dimensions(mm)												Speed (m/min)		Motor (kw)	N.W./G.W (kg)	Min radius of carve(m)
	A	B	C	D	E	F	G	H	L	J	N	K	50Hz	60Hz			
	12/3	12/3	50Hz	60Hz	50Hz	60Hz	50Hz	60Hz	50Hz	60Hz	50Hz	60Hz	50Hz	60Hz			
NT-050-1	382	124.5	324	180	75~125	217	125.5	95.5	200	51.5	41	7/8"-9UNC (Φ 22.2)	20	24	0.12 2P	45/47	1.3
NTD-050-1													20/5	24/6	0.12/0.03 2/8P		
NT-050-2	382	124.5	324	180	75~125	217	125.5	120	200	51.5	41	7/8"-9UNC (Φ 22.2)	20	24	0.12 2P	45/47	1.3
NTD-050-2													20/5	24/6	0.12/0.03 2/8P		
NT-100-1	382	124.5	324	180	75~125	217	125.5	120	200	51.5	41	7/8"-9UNC (Φ 22.2)	20	24	0.18 2P	45/47	1.3
NTD-100-1													20/5	24/6	0.18/0.04 2/8P		
NT-100-2	382	124.5	324	180	75~125	217	125.5	95.5	200	51.5	41	7/8"-9UNC (Φ 22.2)	20	24	0.18 2P	45/47	1.3
NTD-100-2													20/5	24/6	0.18/0.04 2/8P		
NT-200-2	392	125	357	183	100~150	221	159	120	230	60	36	1"-8UNC (Φ 25.4)	20	24	0.37 2P	50/52	1.7
NTD-200-2													20/5	24/6	0.37/0.09 2/8P		

*Different Flange Width options available on request, Maximun:300mm.